

CLAIMS DATA COLLECTION & ANALYSIS

CTC Rates for Contract Adjudication

June 6, 2017

Notes

- Analysis included data for:
 - Blue Cross Blue Shield of Rhode Island (BCBSRI)
 - Neighborhood Health Plan of Rhode Island (NHPRI)
 - Tufts
 - UnitedHealthcare
 - UnitedHealthcare (New England)
- Used Onpoint's standard attribution method which includes a 24-month look-back and CMS Evaluation & Management (E&M) codes
- Exclusions included:
 - Maternity and behavioral health claims
 - Members attributed to pediatric providers
 - Children, ages 0–17 years

CTC Cohort 1: 15 Practice Sites

- Blackstone Valley Community Health Care Inc.
- Coastal Medical Inc. - Greenville
- Coastal Medical Inc. - Hillside
- Coastal Medical Inc. - Narragansett
- Coastal Medical Inc. - Wakefield
- Family Health and Sports Medicine
- Kristine Cuniff
- Memorial Hospital Center for Primary Care
- South County Hospital Family Medicine
- South County Internal Medicine
- Stuart Demirs
- Thundermist CHC - Wakefield
- Thundermist CHC - Woonsocket
- University Family Medicine
- University Medicine - Governor Street Primary Care

CTC Cohort 2: 21 Practice Sites

- Anchor Medical Associates - Lincoln
- Anchor Medical Associates - Providence
- Anchor Medical Associates - Warwick
- Aquidneck Medical Associates Inc. Newport
- Aquidneck Medical Associates Inc. Portsmouth
- Associates in Primary Care Medicine Inc.
- EBCAP - East Bay Family Health Center - Newport
- EBCAP - East Providence
- Medical Associates of RI - Bristol
- Medical Associates of RI - EP
- Ocean State Medical
- Tri-Town Community Action Agency
- University Internal Medicine Inc.
- University Medicine 909 North Main
- University Medicine Barrington
- University Medicine East Ave
- University Medicine Plain Street
- University Medicine Warwick Family Medicine
- WellOne - Foster
- WellOne - North Kingstown
- WellOne - Pascoag

CTC Cohort 3: 12 Practice Sites

- Affinity Physicians Family Medicine - Pawtucket
- CCAP FHS of Coventry
- CCAP FHS of Cranston
- CCAP Wilcox Family Health Center Warwick
- Internal Medicine Center
- Internal Medicine Partners Inc
- Nardone Medical Associates Inc.
- Richard M. Del Sesto MD
- South County Walk In and Primary Care
- Thundermist Health Center- West Warwick
- Women's Primary Care Women's Medicine Collaborative
- Wood River Health Services

CTC Cohort 4: 25 Practice Sites

- Affinity Physicians LLC - Arcand Family Medicine
- Affinity Physicians LLC - Brookside Family Medicine
- Affinity Physicians LLC - Primary Medical Group of Warwick
- Barrington Family Medicine
- Charter Care Medical Associates
- Coventry Primary Care Associates
- John Chaffee D.O. Ltd.
- North Kingstown Family Practice
- Primary Care of Barrington
- Providence Community Health Centers Inc-Capital Hill
- Providence Community Health Centers Inc-Central
- Providence Community Health Centers Inc-Chad Brown
- Providence Community Health Centers Inc-Chafee
- Providence Community Health Centers Inc-Crossroads
- Providence Community Health Centers Inc-North Main Street
- Providence Community Health Centers Inc-Olneyville
- Providence Community Health Centers Inc-Prairie Avenue
- Solmaz Behtash DO
- South County Medical Group Primary Care Wakefield
- South County Medical Group Primary Care Westerly
- Southcoast Health System - Family Medical Middletown
- Southcoast Health System - Family MediCenter
- Southcoast Health System - Linden Tree Family Health Center
- Southcoast Health System - Tiverton Family Practice
- Wickford Family Medicine

ED Visits per 1,000 Member Months

Group	July 2014 – June 2015	July 2015 – June 2016
Cohort 1	33.7	33.6
Cohort 2	26.4	26.6
Cohort 3	48.3	47.8
Cohort 4	39.3	39.9
Comparison	30.5	31.4

IP Admissions per 1,000 Member Months

Group	July 2014 – June 2015	July 2015 – June 2016
Cohort 1	6.0	6.0
Cohort 2	7.0	6.8
Cohort 3	8.0	7.5
Cohort 4	7.3	6.4
Comparison	8.3	8.0

CTC Cohort 1 & Comparison

Rate per 1,000 Member Months

Group	July 2014 – June 2015	July 2015 – June 2016	Difference (2014-2016)	% Difference (2014-2016)
	(A)	(B)	(B-A)	
Emergency Department Visits				
(1) Cohort 1	33.7	33.6	-0.1	-0.3%
(2) Comparison	30.5	31.4	0.9	3.0%
Difference (1-2)			-1.0	-3.3%
Inpatient Admissions				
(1) Cohort 1	6.0	6.0	0.0	0.0%
(2) Comparison	8.3	8.0	-0.3	-3.6%
Difference (1-2)			0.3	3.6%

CTC Cohort 2 & Comparison

Rate per 1,000 Member Months

Group	July 2014 – June 2015	July 2015 – June 2016	Difference (2014-2016)	% Difference (2014-2016)
	(A)	(B)	(B-A)	
Emergency Department Visits				
(1) Cohort 2	26.4	26.6	0.2	0.8%
(2) Comparison	30.5	31.4	0.9	3.0%
Difference (1-2)			-0.7	-2.2%
Inpatient Admissions				
(1) Cohort 2	7.0	6.8	-0.2	-2.9%
(2) Comparison	8.3	8.0	-0.3	-3.6%
Difference (1-2)			0.1	0.7%

CTC Cohort 3 & Comparison

Rate per 1,000 Member Months

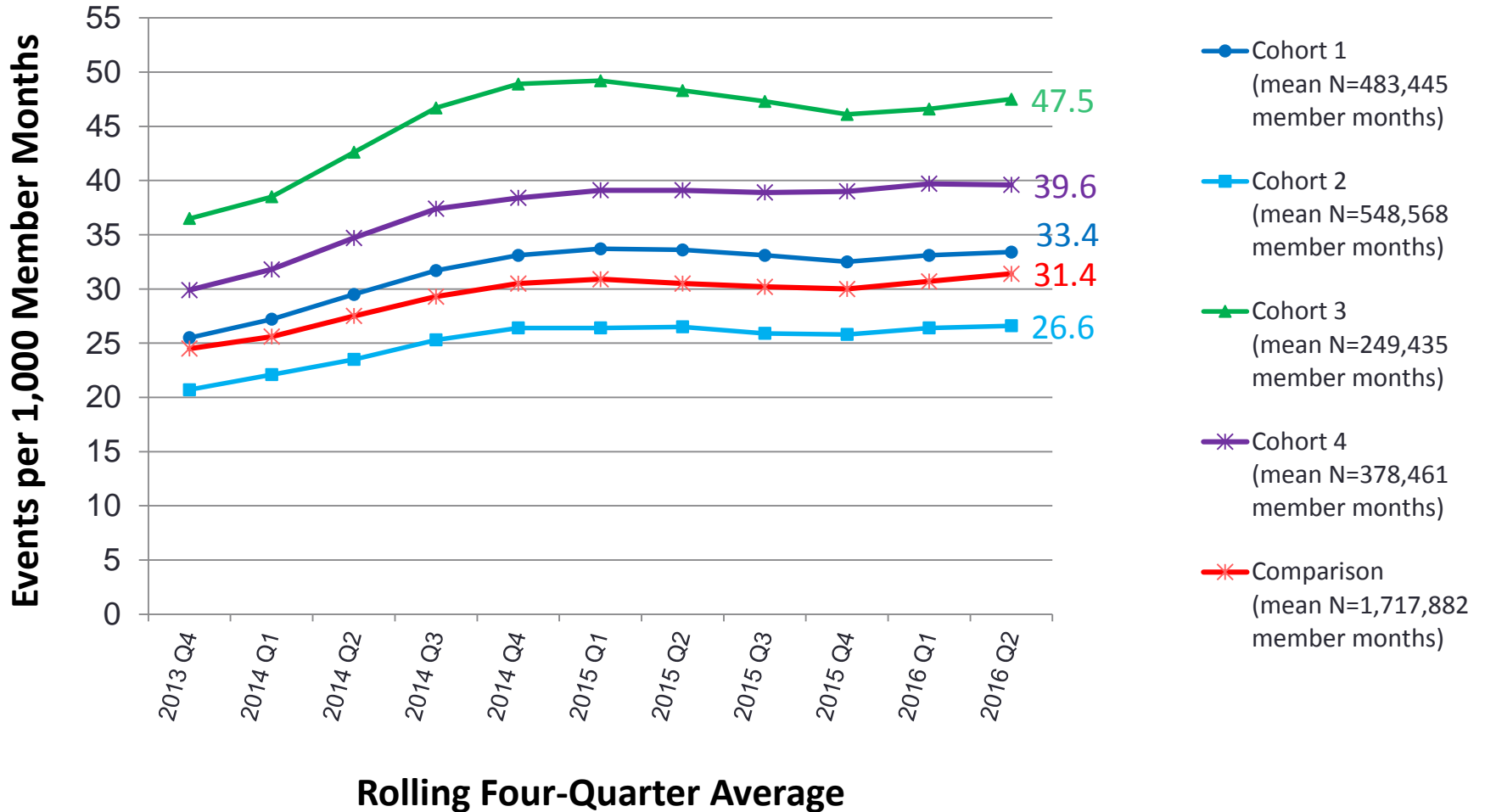
Group	July 2014 – June 2015	July 2015 – June 2016	Difference (2014-2016)	% Difference (2014-2016)
	(A)	(B)	(B-A)	
Emergency Department Visits				
(1) Cohort 3	48.3	47.8	-0.5	-1.0%
(2) Comparison	30.5	31.4	0.9	3.0%
Difference (1-2)			-1.4	-4.0%
Inpatient Admissions				
(1) Cohort 3	8.0	7.5	-0.5	-6.3%
(2) Comparison	8.3	8.0	-0.3	-3.6%
Difference (1-2)			-0.2	-2.7%

CTC Cohort 4 & Comparison

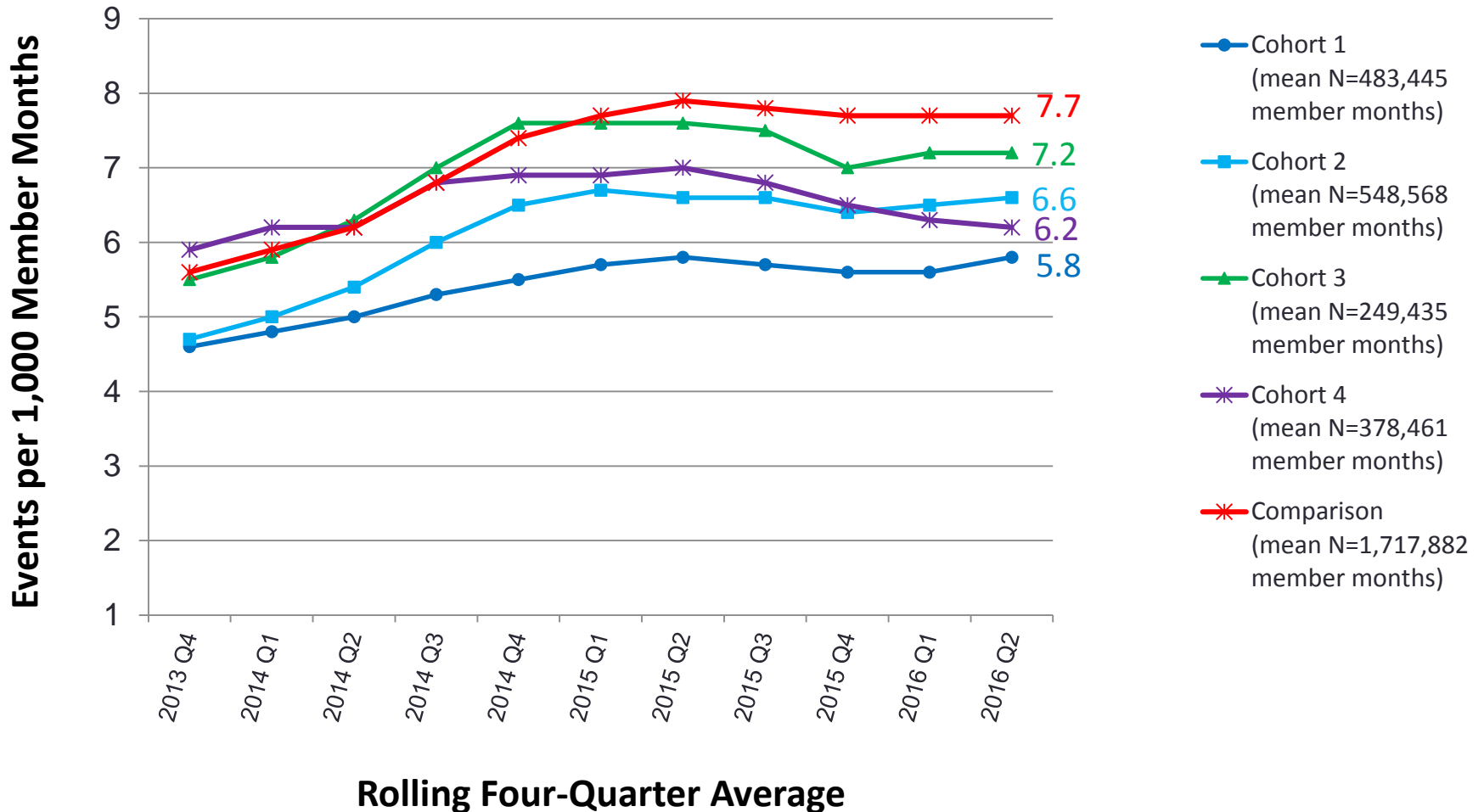
Rate per 1,000 Member Months

Group	July 2014 – June 2015	July 2015 – June 2016	Difference (2014-2016)	% Difference (2014-2016)
	(A)	(B)	(B-A)	
Emergency Department Visits				
(1) Cohort 4	39.3	39.9	0.6	1.5%
(2) Comparison	30.5	31.4	0.9	3.0%
Difference (1-2)			-0.3	-1.5%
Inpatient Admissions				
(1) Cohort 4	7.3	6.4	-0.9	-12.3%
(2) Comparison	8.3	8.0	-0.3	-3.6%
Difference (1-2)			-0.6	-8.7%

ED Visit Rate



Inpatient Admission Rate



Supplemental Cohort Demographics

Demographics for July 2015 to June 2016 period:

Cohort	Member Months	Gender Percentages	Average Age (Years)
One	496,161	Male: 40.5%, Female 59.5%	46.9
Two	539,733	Male: 42.1%, Female 57.9%	50.0
Three	279,966	Male: 36.8%, Female 63.2%	43.5
Four	419,506	Male: 38.5%, Female 61.5%	44.7
Comparison	1,730,591	Male: 43.6%, Female 56.4%	49.1